



Use of Zebra ZD420t printer



United Nations
Educational, Scientific and
Cultural Organization

Regional Centre for
Library Information Systems and
Current Research Information Systems
Regionalni center za knjižnične
informatijske sisteme in informatijske
sisteme o raziskovalni dejavnosti



© IZUM, 2022

IZUM, COBISS, COMARC, COBIB, COLIB, CONOR, SICRIS, E-CRIS, COBISS3, mCOBISS, COBISS+, dCOBISS are registered trademarks owned by IZUM.

CONTENTS

- 1 Introduction 1
- 2 Setup 1
- 3 Driver installation 2
- 4 Setup in the COBISS3 application 4
- 5 Troubleshooting..... 7

FIGURES

- Figure 1: ZD420 printer 1
- Figure 2: Control panel, devices and printers2
- Figure 3: Page setup3
- Figure 4: Print options.....3
- Figure 5: Graphic options.....4
- Figure 6: COBISS3 user interface.....4
- Figure 7: Logical destinations editor.....5
- Figure 8: Logical destinations setup.....5
- Figure 9: Details6
- Figure 10: Refresh settings in the COBISS3 user interface6
- Figure 11: Logical destinations editor for member labels.....7
- Figure 12: Printing a test page.....7
- Figure 13: Calibrating the medium8

1 Introduction

This document contains instructions for using the ZD420 printer in the COBISS system. There are various versions of the ZD420 printer, which is important to know as the same label is displayed on the housing of all the printer versions. The versions T (Thermal Transfer) and D (Direct Transfer) mostly differ in housing shape. Version T with a classic ribbon, and the version with a replacement cartridge, commonly known as the Zebra ZD420 Ribbon Cartridge Printer, have the same housing. We do not recommend the model with the replacement cartridge, predominately because of how expensive the cartridges are. That is why we recommend that, when ordering, you choose the **ZD420t** model (Thermal Transfer).



Figure 1: ZD420 printer

2 Setup

We recommend that a technically skilled person performs the initial installation of the printer.

When setting up and installing the printer, follow the instructions available on the Zebra manufacturer's official website (<https://www.zebra.com/us/en/support-downloads/printers/desktop/zd420t.html>).

In order to facilitate the use of the printer, the following video instructions are available:

- description of the printer functionalities,
- setting up and installing the printer,
- loading the black ribbon,
- installing the label dispenser module,
- calibrating for suitable label format, and
- cleaning the printhead.

The required ZDesigner drivers and manuals with detailed instructions for using the printer are also available on the website.

3 Driver installation

Once the driver is installed, the settings have to be adjusted before you start printing labels. This can be done in the **Control Panel**, where you select **Devices and Printers**. All the available printers will be shown on-screen. Select the *ZDesigner ZD420-203dpi ZPL* printer and right-click it. Select **Printing preferences** from the options (see Figure 2).

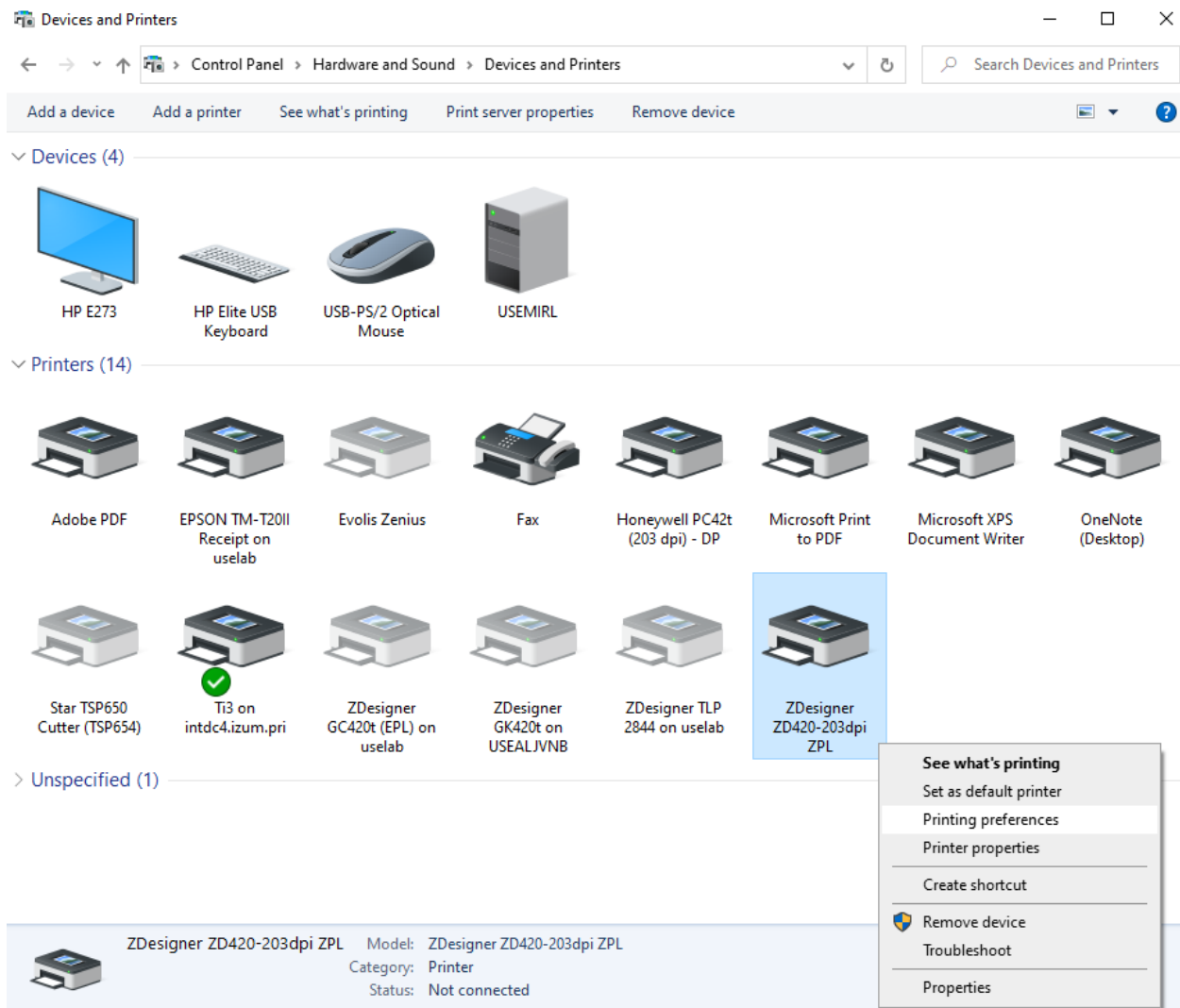


Figure 2: Control panel, devices and printers

Once you click on **Printing preferences**, a new window will appear where you select **Page Setup** (see Figure 3). Enter the width and height of the medium or label that you use into the fields that are highlighted in yellow.

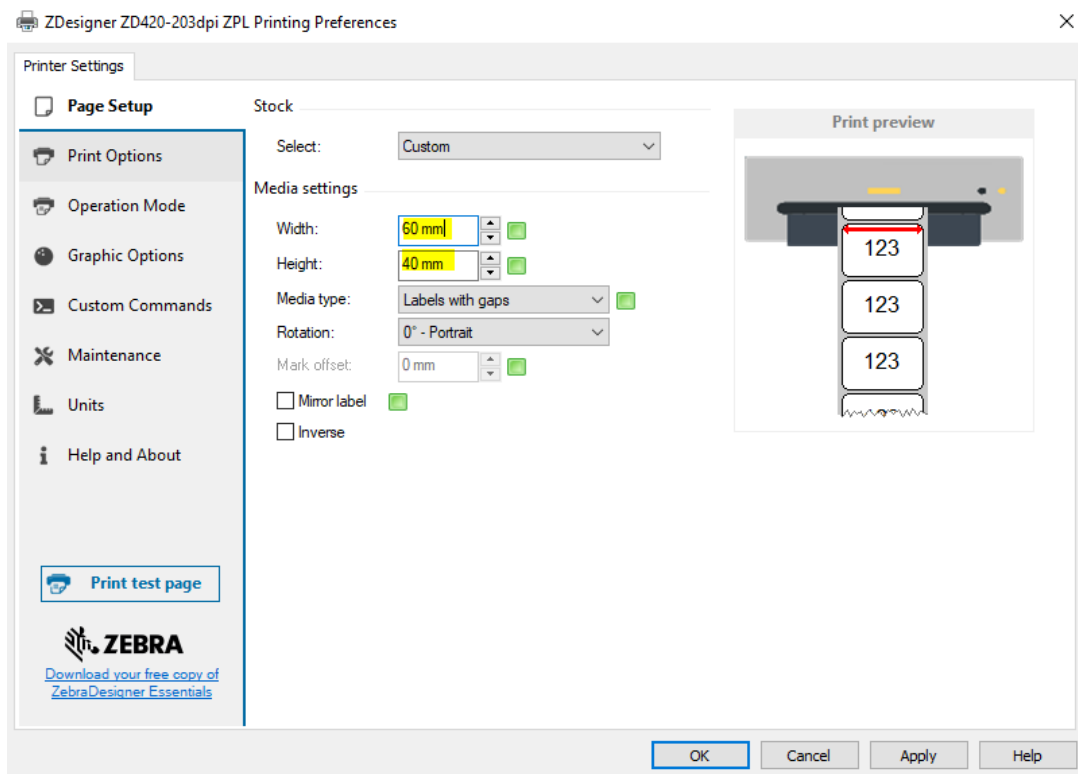


Figure 3: Page setup

Once you finish the **Page Setup**, select **Print Options** and adjust the speed, temperature and printing mode (see Figure 4).

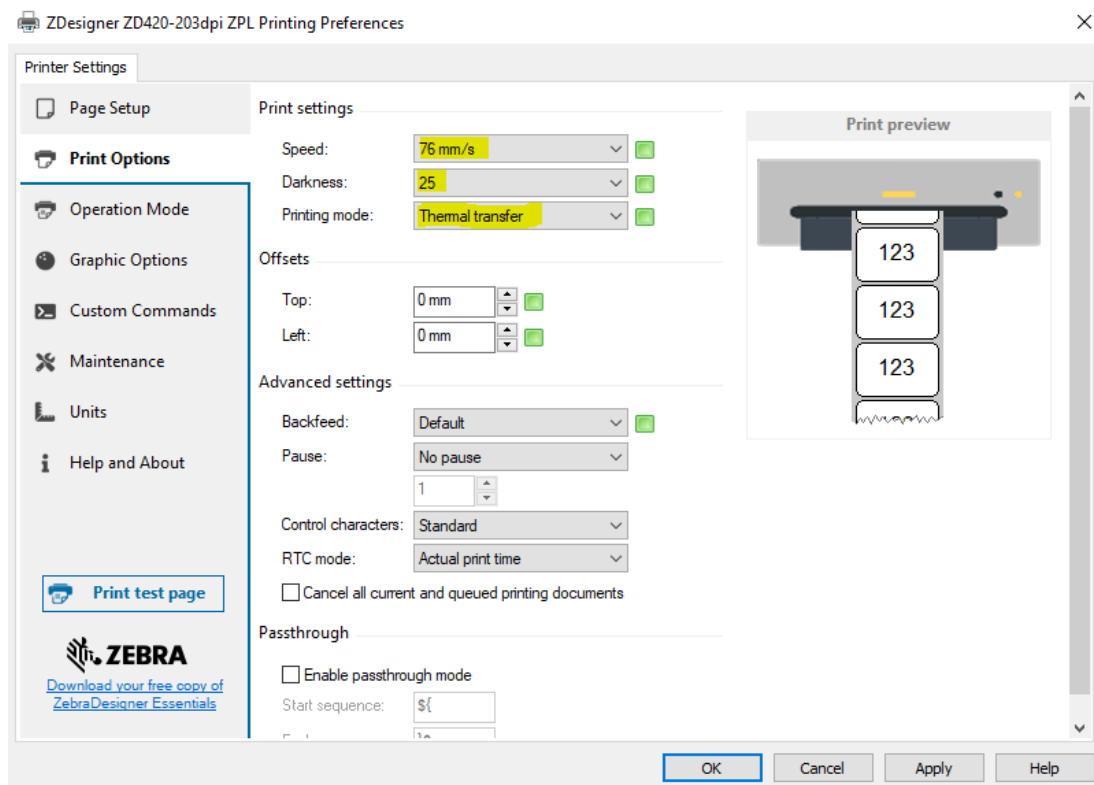


Figure 4: Print options

Finally, check the **Graphic options**, where the slider under **Dithering** should be set to *Clipart* (see Figure 5).

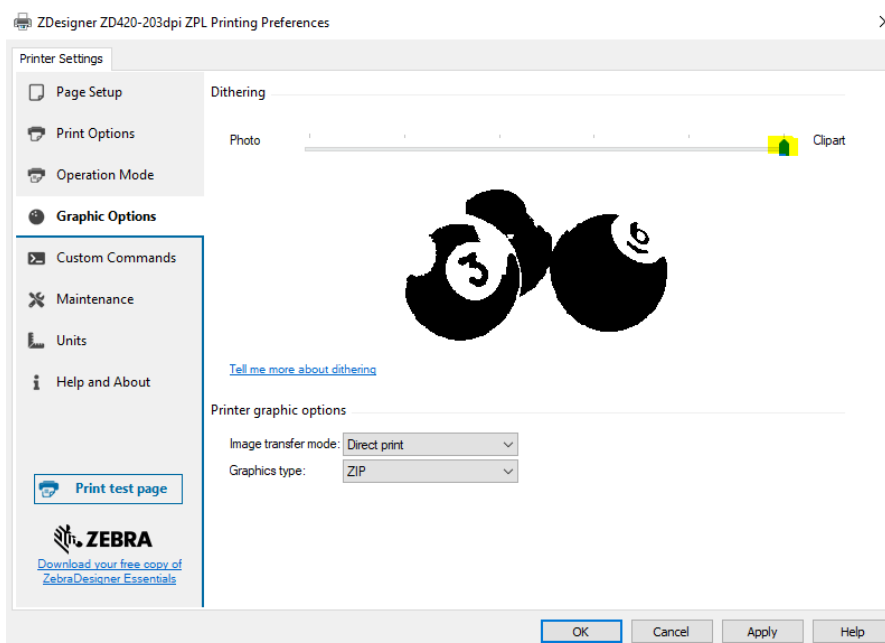


Figure 5: Graphic options

4 Setup in the COBISS3 application

In COBISS3, select the printer with which you intend to print the labels for the material from the logical destinations. Select **System / Settings / Logical Destinations** (see Figure 6).

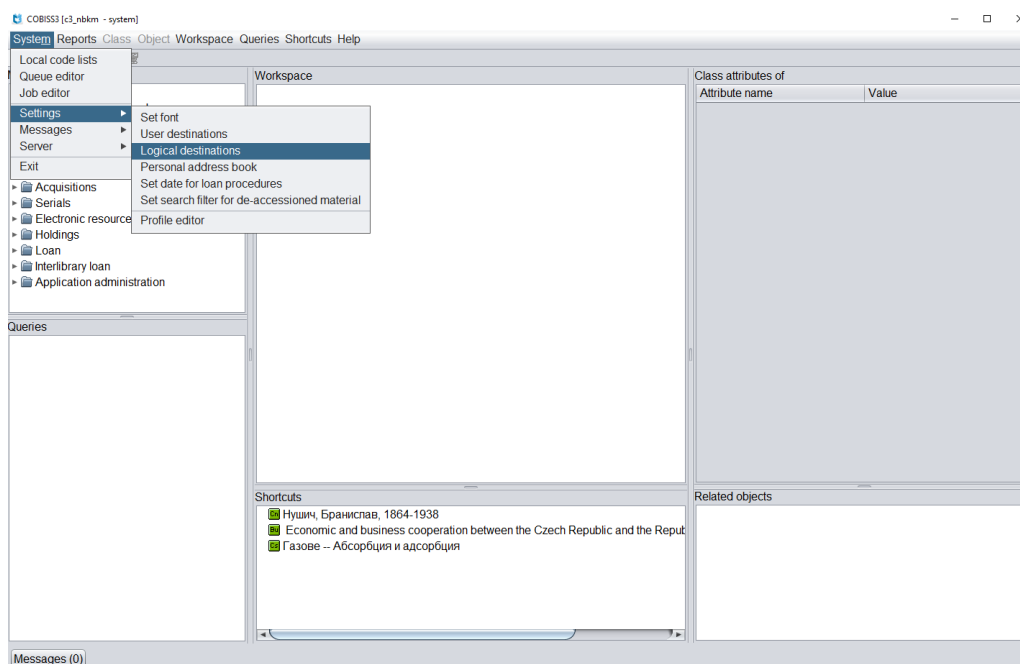


Figure 6: COBISS3 user interface

The **Logical destinations** editor window will open, where you select the option *Label – material: [default local printer]*, and click **Edit** (see Figure 7).

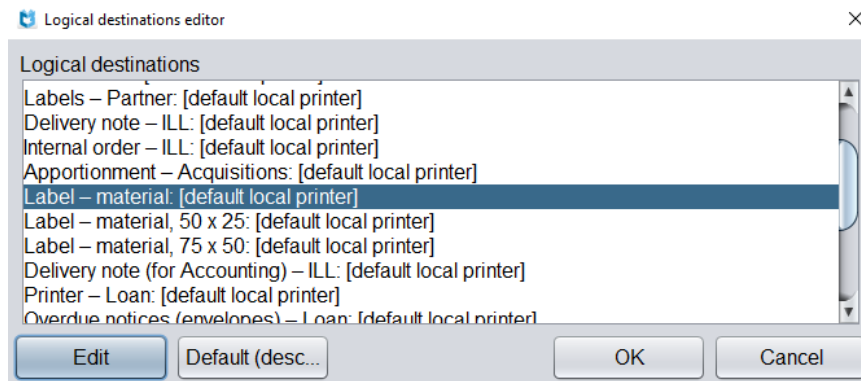


Figure 7: Logical destinations editor

The **User destinations** windows will open, where you click the **Add printer** button. From the drop-down list, select the printer *ZDesigner ZD420-203dpi ZPL*, with which you intend to print the labels for the material (see Figure 8).

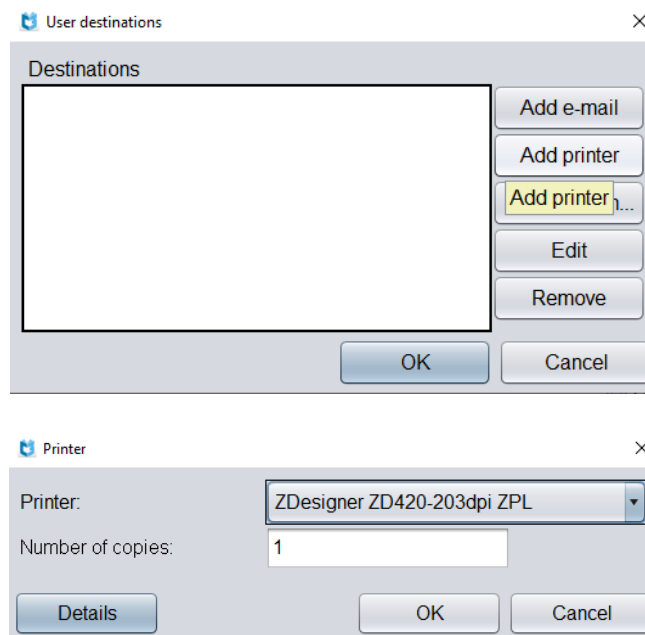


Figure 8: Logical destinations setup

Once you select the printer, click the **Details** button and check whether the additional settings for this printer type are correct (see Figure 9).

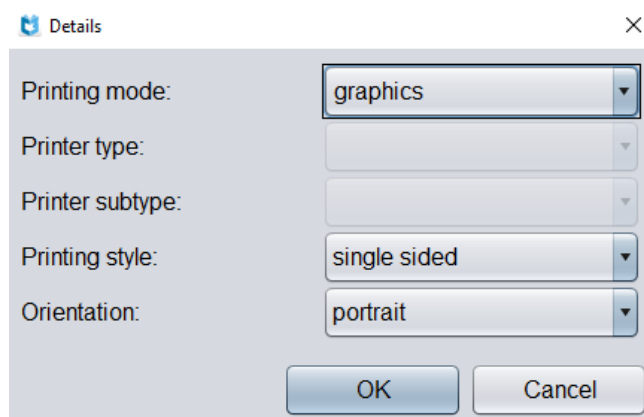


Figure 9: Details

Once you define all the settings, confirm each choice by clicking the **OK** button. At the end, select **Refresh settings** in the **System** menu (see Figure 10). If this option is not available, you can refresh the new settings by signing out and back into the COBISS3 software.

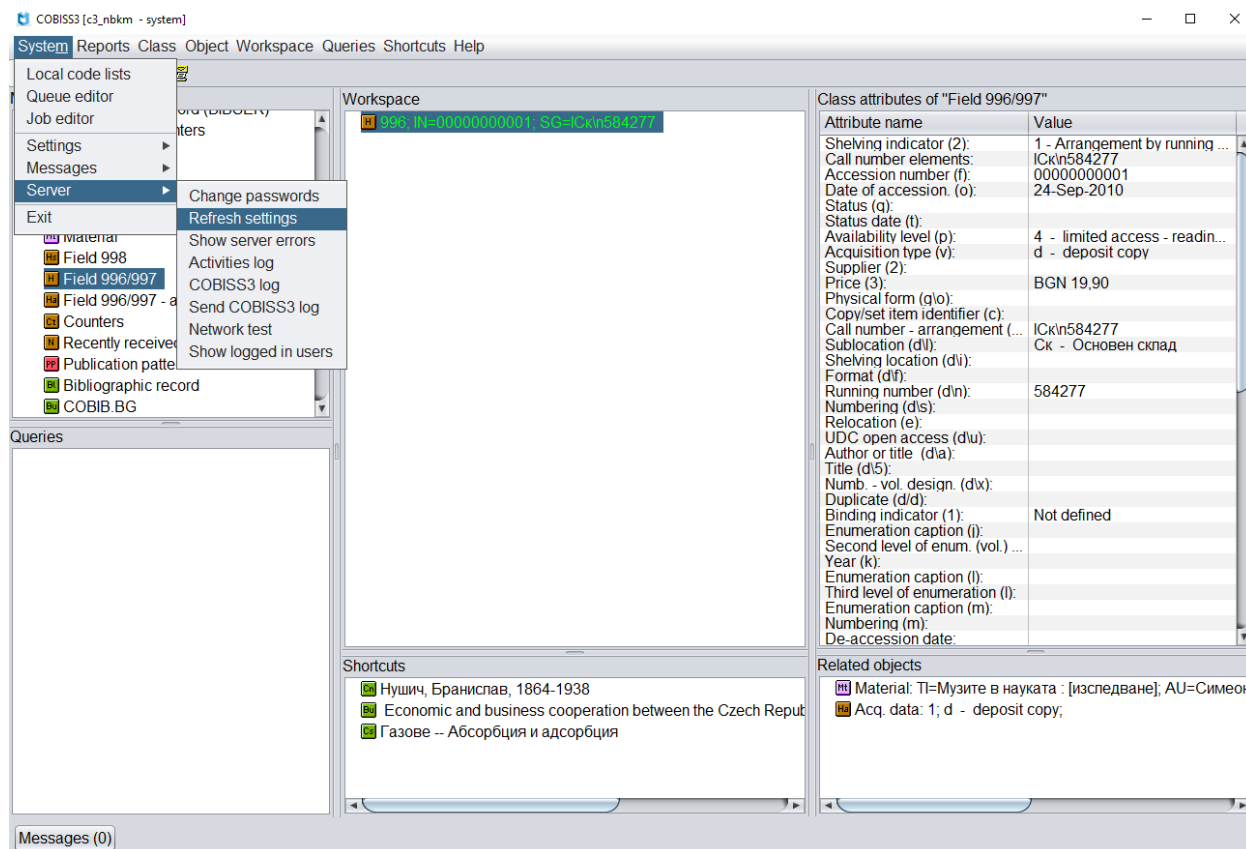


Figure 10: Refresh settings in the COBISS3 user interface

Now you can start printing labels for the material.

If you wish to use the same printer to print labels for members, the process remains identical to the one described in the previous steps. The only difference is setting the logical destination to *Label – Loan (member)* (see Figure 11).

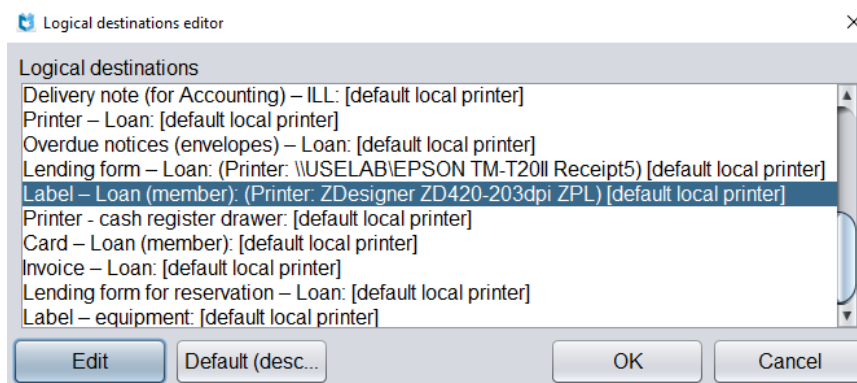


Figure 11: Logical destinations editor for member labels

5 Troubleshooting

If, after installing the drivers and setting the logical destinations, printing labels does not work correctly, firstly check whether the printer responds to the operation system on which it is installed. In **Control Panel** select **Devices and Printers**. All available printers will be displayed on-screen. Select printer *ZDesigner ZD420-203dpi ZPL* and right-click it. From the options, select **Printing preferences**. A new window will open, where you select **Print test page** in the bottom left corner (see Figure 12).

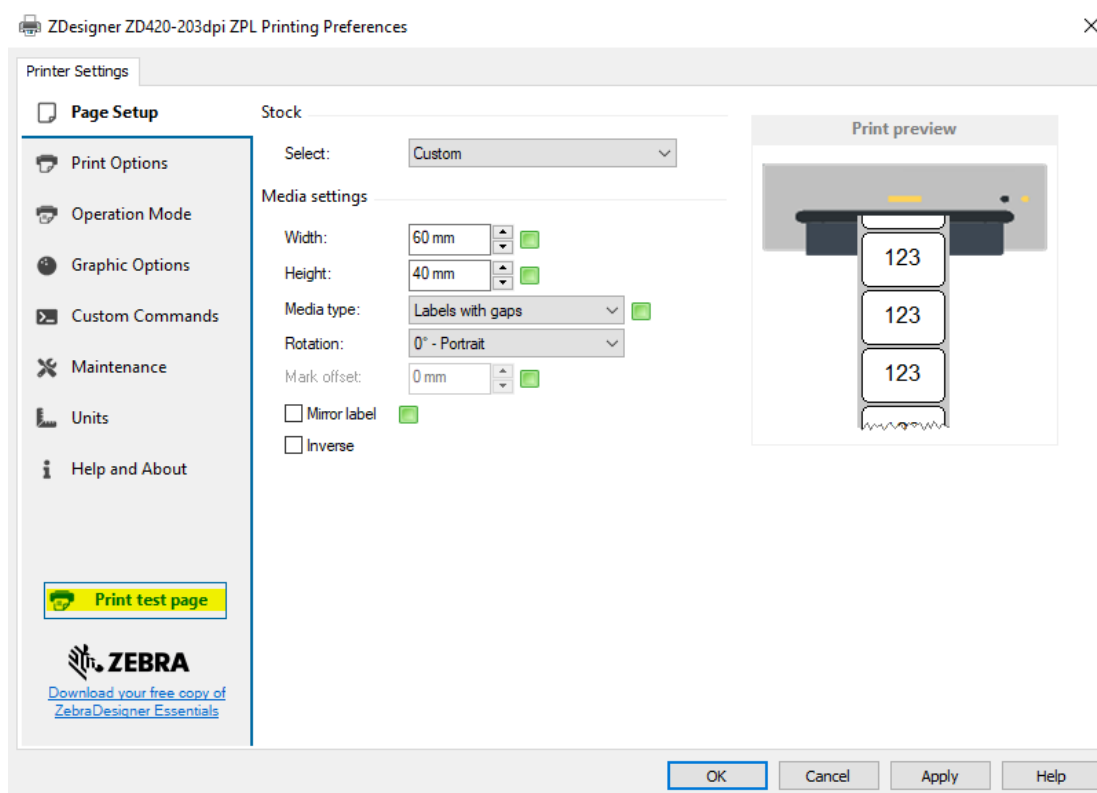


Figure 12: Printing a test page

If the printer is installed correctly, a sample label will be printed.

If, when printing, there is a shift in the contents of the label, we advise to carry out medium calibration via printer drivers. In this procedure, the printer automatically adjusts the medium and the sensor to the label's dimensions. You can start the process by clicking the button *Calibrate* in the **Maintenance** tab (see Figure 13).

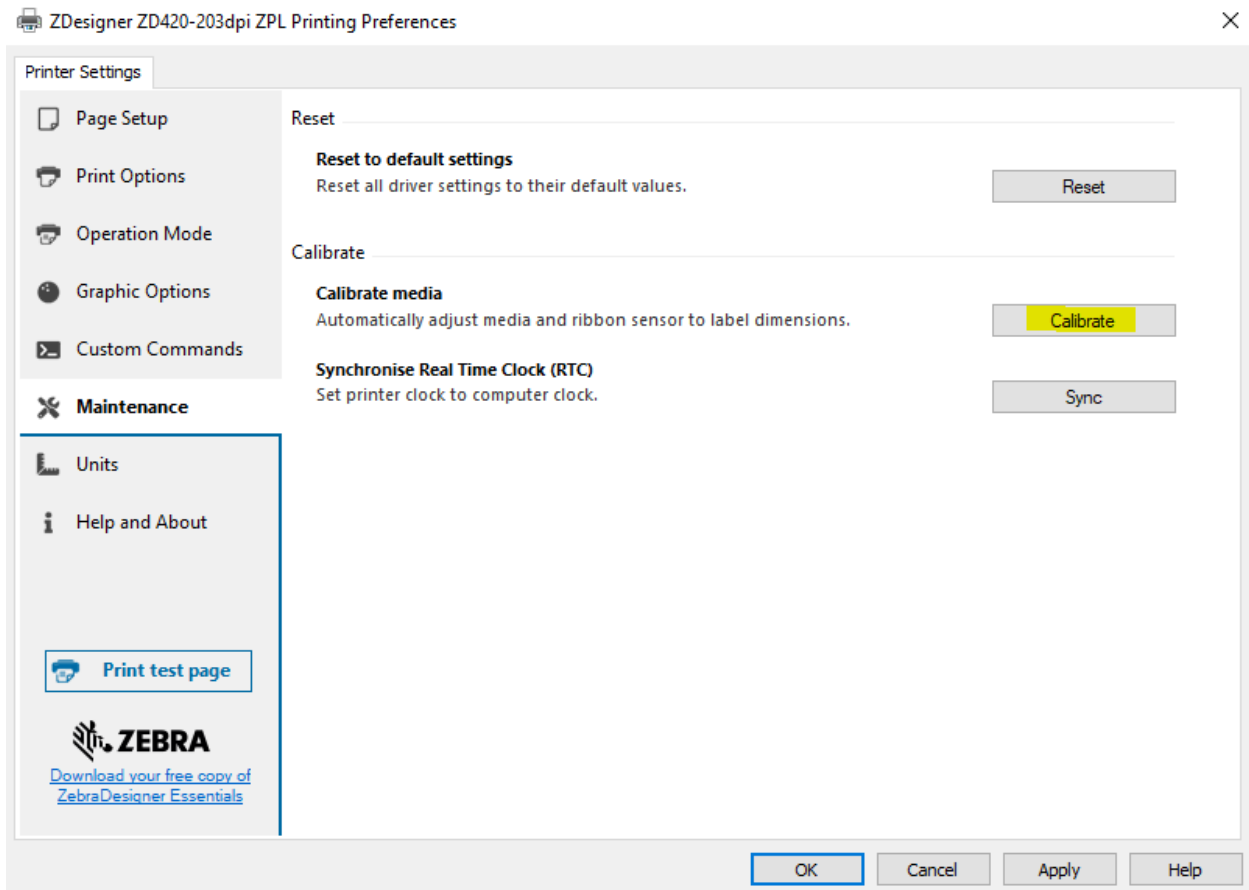


Figure 13: Calibrating the medium

The printer uses four blank labels during the calibration process. After the calibration process is complete, try printing the label again.